

## FEATURES

- Carbon resistive element.
- Dust proof enclosure.
- Polyester substrate.
- Also upon request:
  - Wiper positioned at 50% or fully clockwise.
  - Long life model for low cost control pot. applications
  - Low torque option
  - Supplied in magazines for automatic insertion.
  - Self extinguishable plastic UL 94V-0
  - Cut track option
  - Special Tapers
  - Mechanical detents

## MECHANICAL SPECIFICATIONS

- Mechanical rotation angle:  $265^\circ \pm 5^\circ$   
 $240^\circ \pm 5^\circ$  available under drawing (blue housing only)
- Electrical rotation angle:  $240^\circ \pm 20^\circ$
- Torque: 0.5 to 2.5 Ncm.  
(0.7 to 3.4 in-oz)
- Stop torque:  $> 10$  Ncm. ( $> 14$  in-oz)
- Life: up to 200K cycles

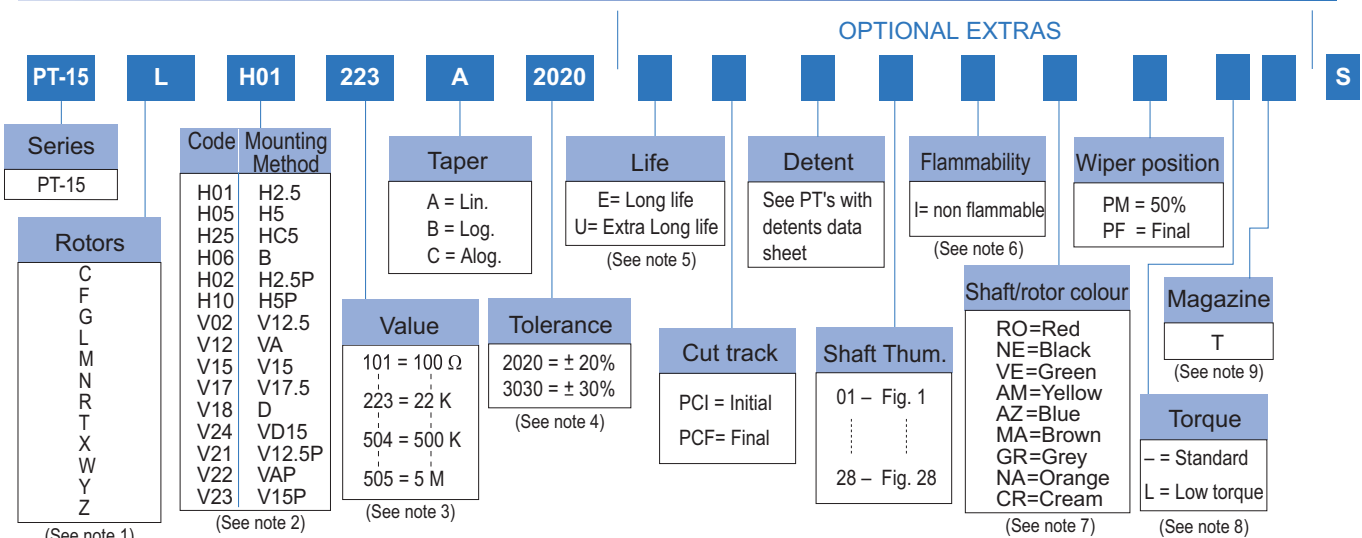
## ELECTRICAL SPECIFICATIONS

- Range of values (\*)  
 $100\Omega \leq R_n \leq 5$  M (Decad. 1.0 - 2.0 - 2.2 - 2.5 - 4.7 - 5.0)
- Tolerance (\*):  $100\Omega \leq R_n \leq 1$  M  $\Omega$  .....  $\pm 20\%$   
 $1$  M  $\Omega < R_n \leq 5$  M .....  $\pm 30\%$
- Max. Voltage: 250 VDC (lin) 125 VDC (no lin)
- Nominal Power  $50^\circ\text{C}$  ( $122^\circ\text{F}$ ) (see power rating curve)  
0.25 W (lin) 0.12 W (no lin)
- Taper (\*) (Log. & Alog. only  $R_n \geq 1$  K) Lin ; Log; Alog.
- Residual resistance(\*):  $\leq 5 \cdot 10^{-3} R_n$  ( $5 \Omega$  min.)
- Equivalent Noise Resistance:  $\leq 3\%$   $R_n$  ( $3 \Omega$  min.)
- Operating temperature\*\*:  $-25^\circ\text{C} + 70^\circ\text{C}$  ( $-13^\circ\text{F} + 158^\circ\text{F}$ )

\* Others upon request

\*\* Up to  $85^\circ\text{C}$  depending on application

## HOW TO ORDER



### NOTES:

- "Z" adjustment only available on "H" versions. Standard colour for the "T" rotor: Orange
- Terminal styles: "P" are crimped terminals. V24 not available with steel terminals. V=Vertical adjust; H=Horizontal Adjust
- Value Example: Code:  $\begin{matrix} 10 & 1 & 100 & \Omega \\ & \swarrow & \searrow & \\ & \text{First two digits of the value.} & \text{Num of zeros} & \end{matrix}$
- Non standard tolerance, upon request. Example: +7%      Code:  $\begin{matrix} 07 & 05 \\ & \swarrow \searrow \\ & \text{negative tolerance} \\ & \text{positive tolerance} \end{matrix}$       -5%
- Life
  - Standard 500 cycles
  - Long life 10000 cycles
  - Extra Long life 100000 cycles (to be studied case by case)
- Non flammable: housing, rotor and shaft. According to UL 94V-0
- Colour shaft/rotor:
  - Potentiometer without shaft: only rotor
  - Potentiometer with shaft: only shaft
 Cream colour only available in standard plastic
- Low Torque:  $\leq 1.5$  Ncm. No detent option available for low torque models
- Magazines (35 pcs/mag): available for VA (12.5), V (12.5), V (12.5P), V (15), V15 (P) and H models. For more information please contact your nearest Piher supplier.

NOTE: The information contained here should be used for reference purposes only.

## HOW TO ORDER CUSTOM DRAWING

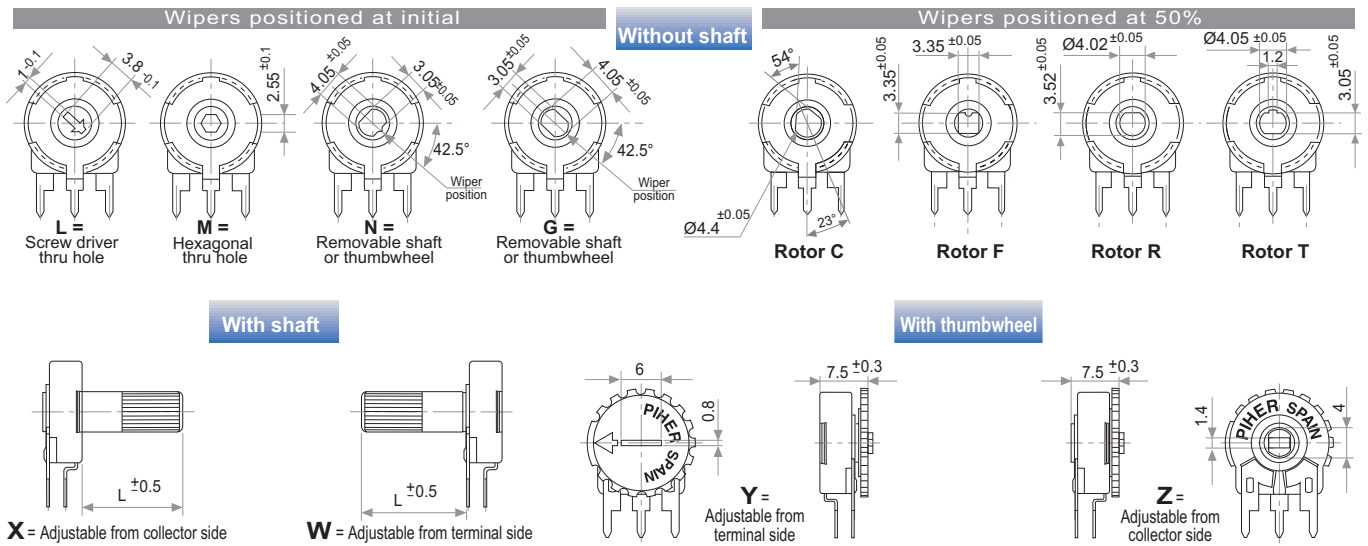
PT-15 LH 01 + DRAWING NUMBER (Max. 16 digits)

This way of ordering should be used for options which are not included in the "How to order" standard and optional extras.

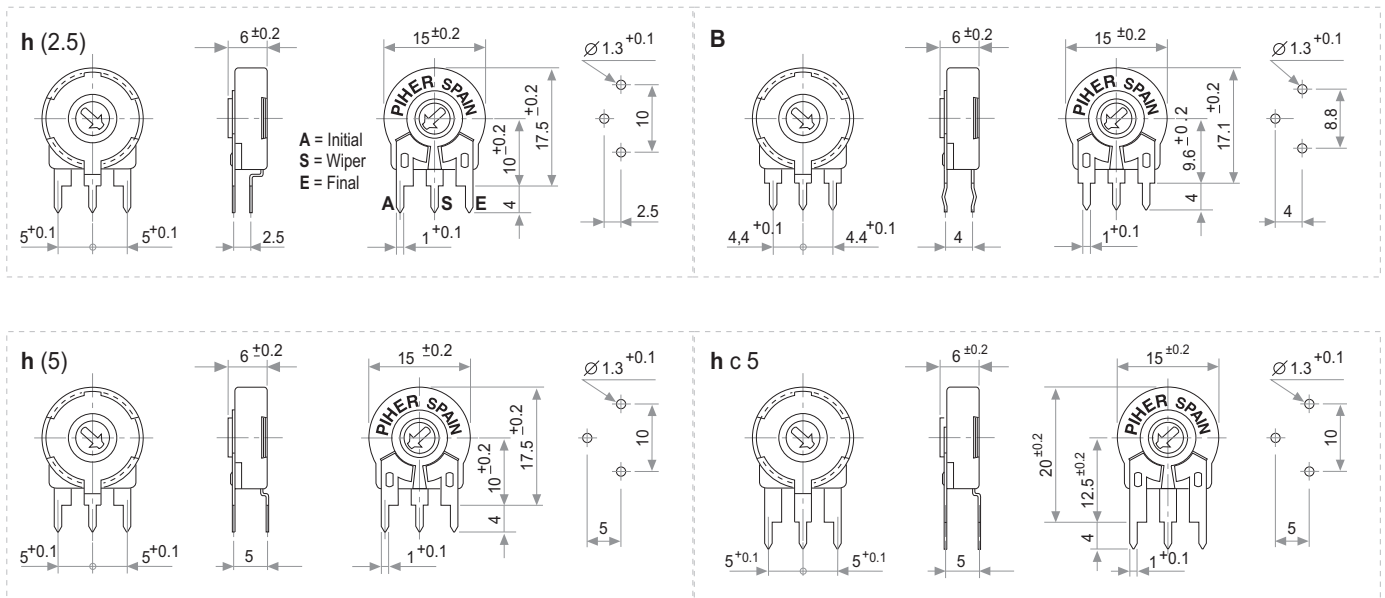
## STANDARD OPTIONS

|                       |            |
|-----------------------|------------|
| Mechanical Life ..... | 500 cycles |
| Cut track .....       | No         |
| Detents .....         | None       |
| Non flammable .....   | No         |
| Rotor colour .....    | White      |
| Shaft colour .....    | Natural    |
| Wiper position .....  | Initial    |
| Torque .....          | Standard   |

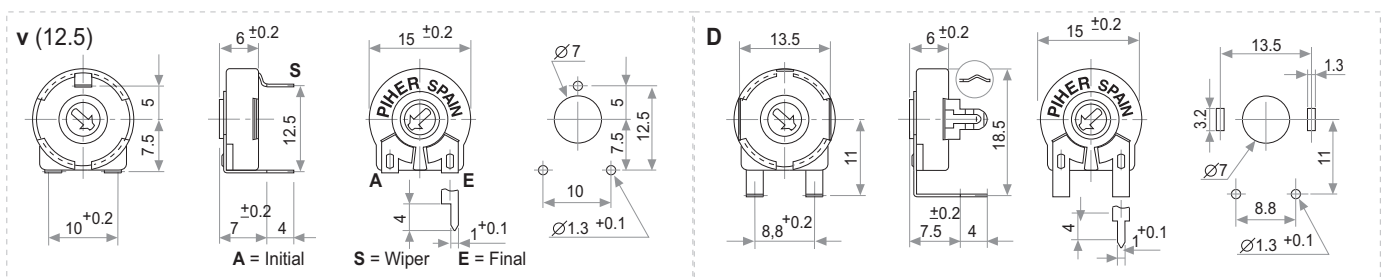
## ROTORS



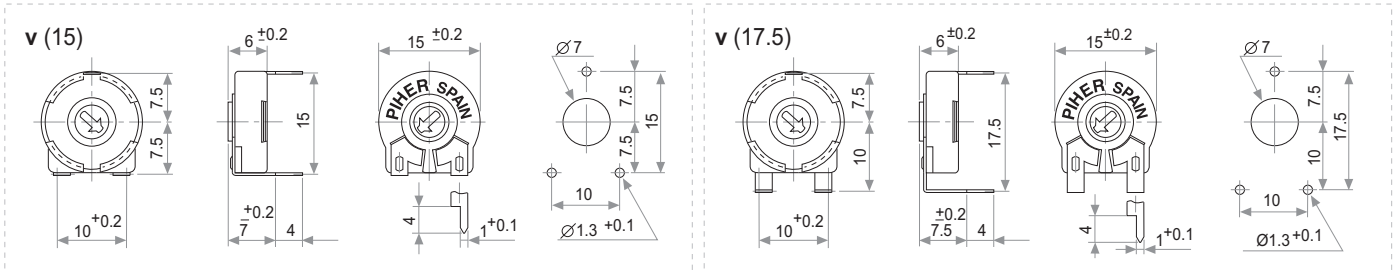
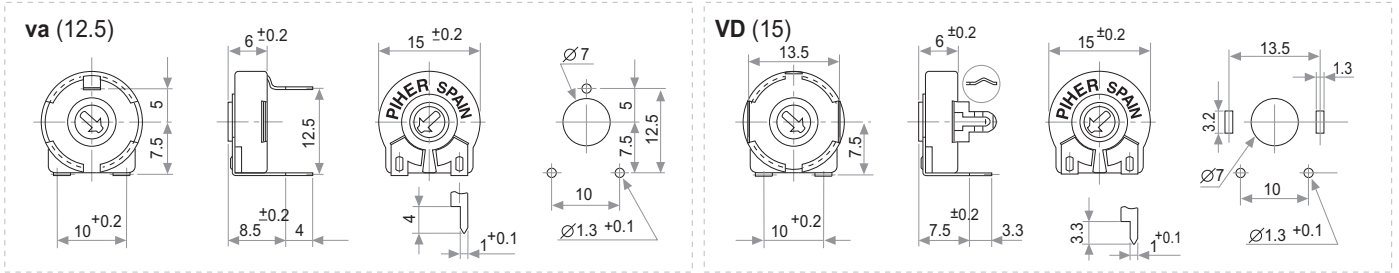
## VERTICAL MOUNT - HORIZONTAL ADJUST



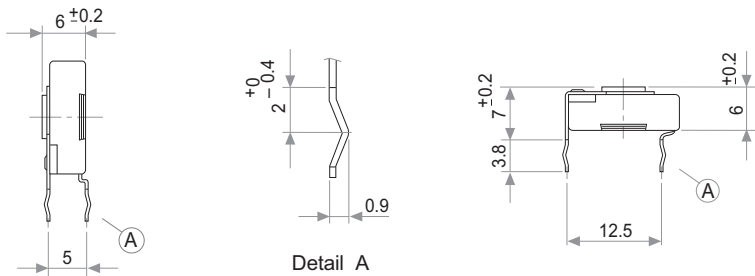
## HORIZONTAL MOUNT - VERTICAL ADJUST



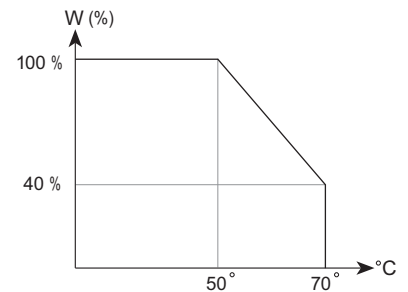
## HORIZONTAL MOUNT - VERTICAL ADJUST



## CRIMPED TERMINALS (DETAIL)

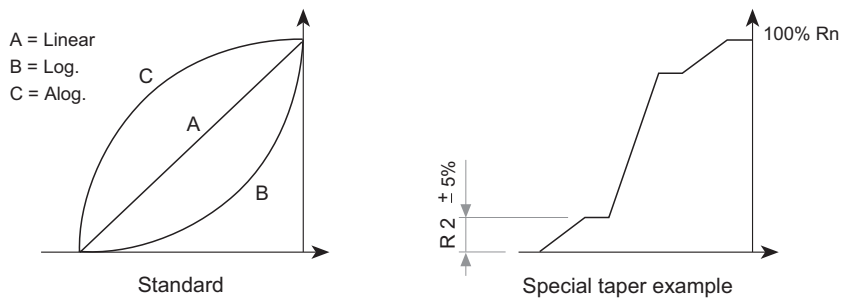


## POWER RATING CURVE



## TAPERS

NOTE: Please note terminals disposition when ordering non linear curves.



## OPTIONS

### Positioning

P.M.

50% ±20°

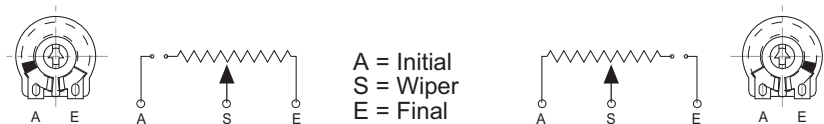


Std. Position = CCW

Cut Track

CCW on-off (A)

CW on-off (E)



## TESTS

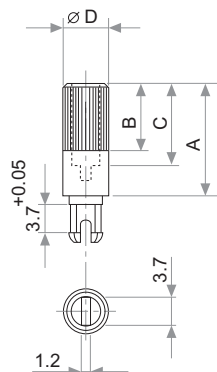
## TYPICAL VARIATIONS

|                                  |                          |                      |
|----------------------------------|--------------------------|----------------------|
| ELECTRICAL LIFE                  | 1.000 h. @ 50°C; 0.25 W  | ±5 %                 |
| MECHANICAL LIFE (CYCLES)         | 500 @ 10 CPM ...15 CPM   | ±3 % (Rn < 1 MΩ)     |
| TEMPERATURE COEFFICIENT          | -25°C; +70°C             | ±300 ppm (Rn <100 K) |
| THERMAL CYCLING                  | 16 h. @ 85°C; 2h. @ 25°C | ±2.5 %               |
| DAMP HEAT                        | 500 h. @ 40°C @ 95% HR   | ±5 %                 |
| VIBRATION (for each plane X,Y,Z) | 2 h. @ 10 Hz. ... 55 Hz. | ±2 %                 |

NOTE : Out of range values may not comply these results.

## SHAFTS

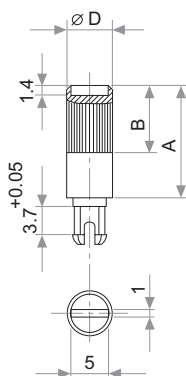
### Hollow model shafts



A = Length (FRS)  
 B = Knurling length  
 C = Hollow depth  
 D = Shaft diameter  
 FRS = From rotor surface

| FIG. | A    | B   | C    | D | Ref. |
|------|------|-----|------|---|------|
| 1    | 12   | 9   | 8    | 6 | 5272 |
| 2    | 19   | 9   | 15   | 6 | 5214 |
| 5    | 9.5  | 6.5 | 5.5  | 6 | 5208 |
| 9    | 35   | 9   | 31   | 6 | 5216 |
| 10   | 37.8 | 9   | 33.8 | 6 | 5218 |
| 11   | 35   | 25  | 15   | 6 | 5209 |
| 13   | 7.8  | 4.8 | 3.8  | 6 | 5265 |

### Solid model shafts



| FIG. | A    | B | D | Ref. |
|------|------|---|---|------|
| 6    | 15   | 9 | 6 | 5219 |
| 7    | 16.8 | 9 | 6 | 5220 |
| 8    | 25.3 | 9 | 6 | 5207 |
| 12   | 46   | 5 | 6 | 5227 |

Slot (1 x 1.4) perpendicular to wiper position. Fig. 12 slot is on line with wiper position.

# SHAFTS

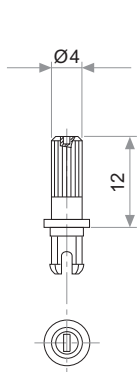


Fig. 3 / Ref. 5372

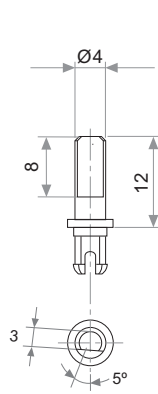


Fig. 15 / Ref. 5217

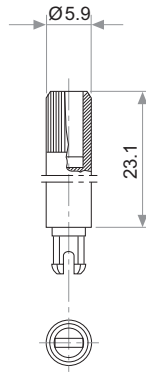


Fig. 17 / Ref. 5210

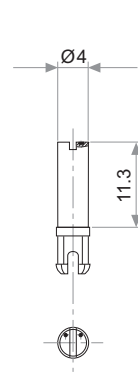


Fig. 18 / Ref. 5271

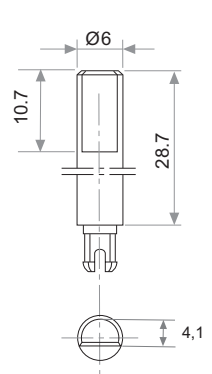


Fig. 19 / Ref. 6032\*

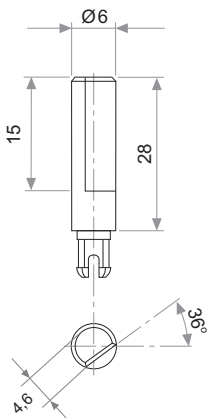


Fig. 20 / Ref. 5369\*

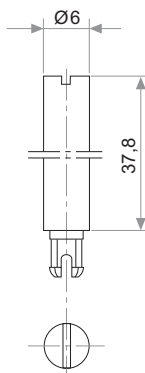


Fig. 21 / Ref. 6031\*

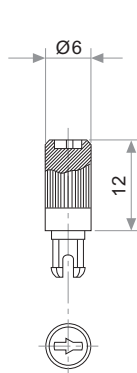


Fig. 22 / Ref. 6029

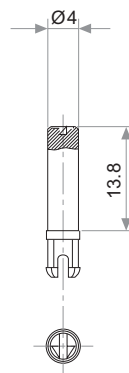


Fig. 23 / Ref. 6022

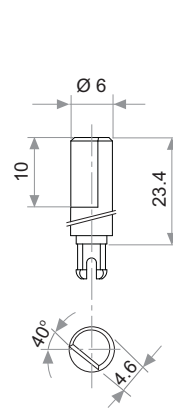


Fig. 29 / Ref. 6162

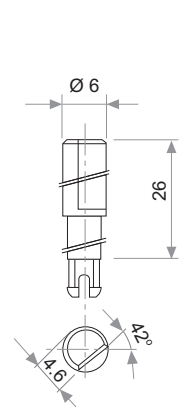


Fig. 25 / Ref. 6059

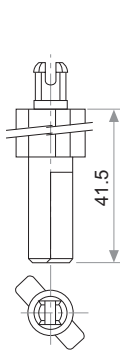


Fig. 27 / Ref. 5268\*

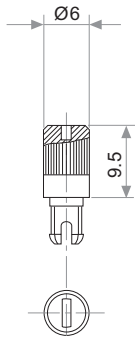


Fig. 28 / Ref. 6055

\* Not available in self extinguishable plastic

# THUMBWHEEL

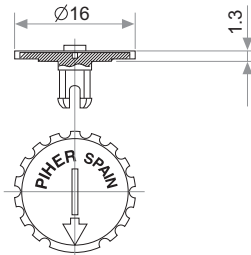


Fig. 4 / Ref. 5371